

V3330-01 WS1 Brine Elbow ASY w/RFC 3/8

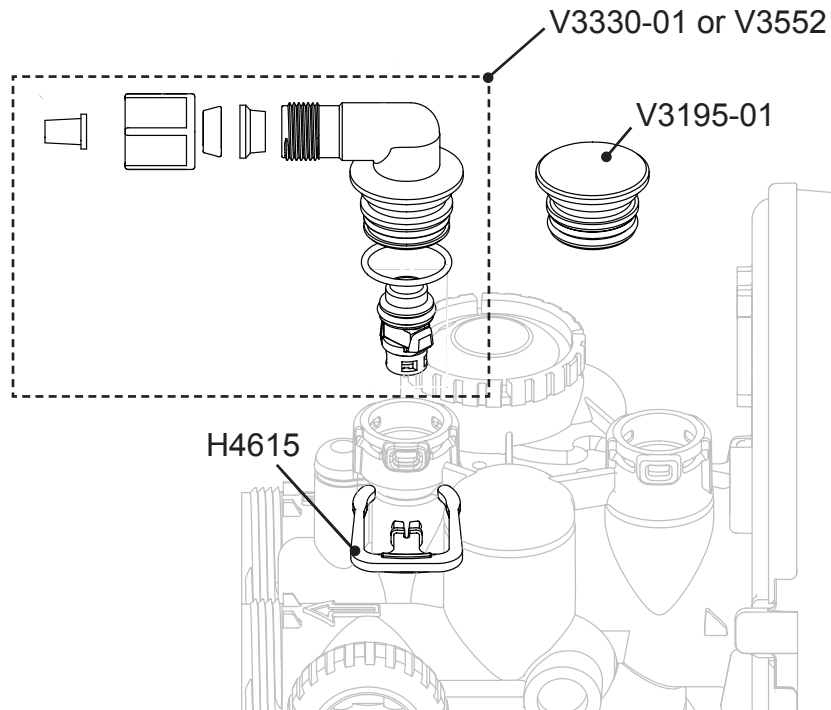
or

V3552 WS1 Brine Elbow Asy w/RFC 1/2

HYDROCARBONS SUCH AS VASELINE®, PETROLEUM JELLY, KEROSENE, BENZENE, GASOLINE, ETC., WILL DAMAGE PRODUCTS THAT CONTAIN O-RINGS OR PLASTIC COMPONENTS. EXPOSURE TO SUCH HYDROCARBONS MAY CAUSE THE PRODUCTS TO LEAK. DO NOT USE CLACK CONTROL VALVE PRODUCT(S) ON WATER SUPPLIES THAT CONTAIN HYDROCARBONS SUCH AS KEROSENE, BENZENE, GASOLINE, ETC.

Installation Instructions:

1. Remove H4615 Elbow Locking Clip.
2. Remove existing fitting which may be a V3195-01 WS1 Refill Port Plug ASY or a brine elbow.
3. Install V3330-01 WS1 Brine Elbow ASY w/RFC 3/8 or V3552 WS1 Brine Elbow Asy w/RFC 1/2.



V3330-01 WS1 Brine Elbow ASY w/RFC 3/8

or

V3552 WS1 Brine Elbow Asy w/RFC 1/2

HYDROCARBONS SUCH AS VASELINE®, PETROLEUM JELLY, KEROSENE, BENZENE, GASOLINE, ETC., WILL DAMAGE PRODUCTS THAT CONTAIN O-RINGS OR PLASTIC COMPONENTS. EXPOSURE TO SUCH HYDROCARBONS MAY CAUSE THE PRODUCTS TO LEAK. DO NOT USE CLACK CONTROL VALVE PRODUCT(S) ON WATER SUPPLIES THAT CONTAIN HYDROCARBONS SUCH AS KEROSENE, BENZENE, GASOLINE, ETC.

Installation Instructions:

1. Remove H4615 Elbow Locking Clip.
2. Remove existing fitting which may be a V3195-01 WS1 Refill Port Plug ASY or a brine elbow.
3. Install V3330-01 WS1 Brine Elbow ASY w/RFC 3/8 or V3552 WS1 Brine Elbow Asy w/RFC 1/2.

